



Springfield | Longhoughton | NE66 3NT

**£675,000**

A stunning fusion of contemporary luxury and coastal charm, this exceptional four-bedroom detached residence is perfectly positioned within the highly desirable village of Longhoughton. Impeccably designed and beautifully finished throughout, the home offers sophisticated open-plan living, a high-specification kitchen, elegant interiors, and open-aspect south-facing rear garden with exceptional outdoor entertaining space. Just moments from breathtaking beaches, renowned coastal walks, and the renowned Running Fox bakery and café, this is an outstanding lifestyle home in one of Northumberland's most sought-after coastal settings.

**RMS** | Rook  
Matthews  
Sayer



**PRESTIGIOUS DETACHED HOME**

**DEDICATED FULLY FITTED HOME OFFICE**

**SPACIOUS OPEN PLAN LIVING/  
DINING / KITCHEN**

**SOUTH FACING REAR GARDEN**

**FOUR DOUBLE BEDROOMS**

**DOUBLE GARAGE**

**HIGH SPECIFICATION KITCHEN**

**GRAVELLED DRIVEWAY PARKING**

**For any more information regarding the property please contact us today**

Set within a most sought-after Northumberland coastal village, this exceptional detached residence combines contemporary luxury with timeless character to create an outstanding family home. Finished to an impeccable standard throughout, the property offers beautifully designed interiors, generous living space, and superb attention to detail.

The welcoming entrance hall features natural limestone flooring with underfloor heating and leads to a stylish and cosy living room with a bespoke storage and media wall incorporating an inset electric fire, alongside a fully fitted home office ideal for modern working. At the heart of the home is a stunning and impressive open-plan kitchen, dining and living space, flooded with natural light from floor-to-ceiling glazing and Velux windows, with exposed stone walls adding warmth and character. The high-specification kitchen is centred around a large statement island and includes premium integrated appliances, granite worktops, and a Kettle boiling water tap, creating the perfect space for both entertaining and everyday family life.

Upstairs, four beautifully presented double bedrooms include built-in double wardrobes and provide comfortable accommodation, including a principal bedroom with a contemporary ensuite shower room. The remaining bedrooms are equally well appointed and are served by a stylish family bathroom with high-quality fittings and rainfall shower.

Externally, the property continues to impress with a gravelled driveway providing multi-vehicle parking, extensive double garage, and surrounding gardens. The south-facing rear garden enjoys an open aspect and features lawned areas, mature planting, a stream, expansive paved sun terrace, and a pergola-covered entertaining space with power supply, currently housing a hot tub – an ideal setting for relaxing or hosting guests in a tranquil coastal environment.

Nestled along the stunning Northumberland coastline, the picturesque village of Longhoughton is renowned for its beautiful sandy beaches, scenic countryside walks, and relaxed coastal lifestyle. Ideally positioned between Alnwick and Craster, the village offers a welcoming community atmosphere, excellent local amenities including a local CO-OP and the highly regarded 'Running Fox' artisan bakery and café. Longhoughton offers easy access to some of Northumberland's most iconic coastline and historic attractions, making it a highly desirable place to call home.

#### **Entrance hall**

Double glazed entrance door and windows, natural limestone floor with underfloor heating, ceiling downlights, spindle staircase to first floor, doors to; home office, living room, open-plan kitchen/living/dining space, WC, and under stairs storage cupboard.

#### **Living room (front) 11'5 x 16'9 (3.48m x 5.11m)**

UPVC double-glazed window with plantation shutters, feature media wall incorporating an 'GAZCO' inset electric fire, fitted cupboards and shelving, ceiling downlights, radiator.

#### **Home office (dual aspect front and side) 9'1 x 8'5 (2.77m x 2.57m) to back of cupboards**

UPVC double-glazed windows with plantation shutters, radiator, floor to ceiling fitted cupboards, ceiling downlights.

#### **Open plan living/kitchen/dining 29'7 x 22'10 (9.02m x 6.96m)**

**Kitchen area** – multi-functional dining kitchen island and fitted wall & base units with full slab A&M 'Mysterio' granite countertops & upstands – including an induction hob with extractor, combi convection/microwave, two single BOSCH ovens, MIELE Coffee machine, Full height larder fridge and separate full height freezer, integrated dishwasher, 'QETTLE' hot tap and filter

Limestone tiled floor, UPVC double-glazed floor to ceiling windows and Velux windows, ceiling down lights, exposed stone walls, underfloor heating

**T: 01665 510044**

Branch [alnwick@rmsestateagents.co.uk](mailto:alnwick@rmsestateagents.co.uk)

**RMS** | Rook  
Matthews  
Sayer

**Utility 5'11 x 7'8 (1.80m x 2.33m)**

Fitted wall & base units with 'Mysterio' granite countertops & upstands, limestone tiled floor, extractor.

**WC**

WC with concealed cistern, cabinet with integrated wash-hand basin, sensor touch operated mirror with anti-mist function, chrome ladder style radiator, fully tiled walls and floor, ceiling downlights, extractor.

**Door to garage 23' x 19'2 (7.01m x 5.84m)**

Two up and over garage doors, double timber doors to rear garden, overhead storage, light and power sockets.

**First floor landing**

Loft access hatch, shelved cupboard, radiator, doors to bedrooms and bathroom.

**Bedroom one (front) 11'8 x 13'11 (3.56m x 4.24m)**

UPVC double-glazed window with plantation shutters, built-in double wardrobe with hanging rail and shelf, radiator, door to ensuite.

**Ensuite 6'6 x 7'10 (1.98m x 2.39m)**

Walk in shower with glass screen incorporating a rainfall head mains shower and separate hand-held attachment, wall mounted WC with concealed cistern, wall mounted drawer unit with integrated wash-hand basin, chrome ladder style radiator, full tiled walls and floor, ceiling downlights, extractor, integral shelves, sensor touch vanity mirror, UPVC double-glazed frosted window.

**Bedroom two (rear) 11'8 x 12'10 (3.56m x 3.91m)**

UPVC double-glazed windows with plantation shutters, feature panelled effect wall, built-in double wardrobe with shelf and hanging rail, radiator.

**Bedroom three (front and side dual aspect) 10'11 into recess x 15'4 (3.33m x 4.67m)**

UPVC double-glazed windows with plantation shutters, built-in double wardrobe with shelf and hanging rail, radiator.

**Bedroom four (rear) 10'9 x 10'2 plus built-in wardrobe (3.28m x 3.10m)**

UPVC double-glazed window with plantation shutters, built-in double wardrobe with shelf and hanging rail, radiator.

**Family bathroom (rear) 6'7 x 6'2 (2.00m x 1.88m)**

Bath with shower screen incorporating a rainfall head mains shower and separate handheld attachment, wall mounted WC with concealed cistern, wall mounted drawer unit with integrated wash-hand basin, ladder style radiator, sensor touch controlled anti-mist mirror, fully tiled walls and floor, ceiling downlights, extractor, UPVC double-glazed frosted window.

**Externally**

Gravelled drive leading to the front entrance and double garage, fenced lawn garden with mature trees leading around to the side of the house. South facing rear garden with an open aspect, fenced and hedge boundaries, lawn garden including a stream, extensive paved patio area leading around to the side of the house, pergola creating a sheltered outside entertainment area with power supply (currently housing a hot tub), and access to the rear of the garage. Electric car charging point

**PRIMARY SERVICES SUPPLY**

Electricity: Mains

Water: "Mains/Other (Please State)"

Sewerage: Mains

Heating: Mains

Broadband: "Cable/FTTC/FTTP/"

Mobile Signal Coverage Blackspot: No

Parking: Driveway & Garage

**MINING**

The North East region is famous for its rich mining heritage and therefore it will be beneficial to conduct a mining search. Confirmation should be sought from a conveyancer as to its effect on the property, if any.

**TENURE**

Freehold – It is understood that this property is freehold, but should you decide to proceed with the purchase of this property, the Tenure must be verified by your Legal Adviser

**COUNCIL TAX BAND: E**

**EPC RATING: TBC**

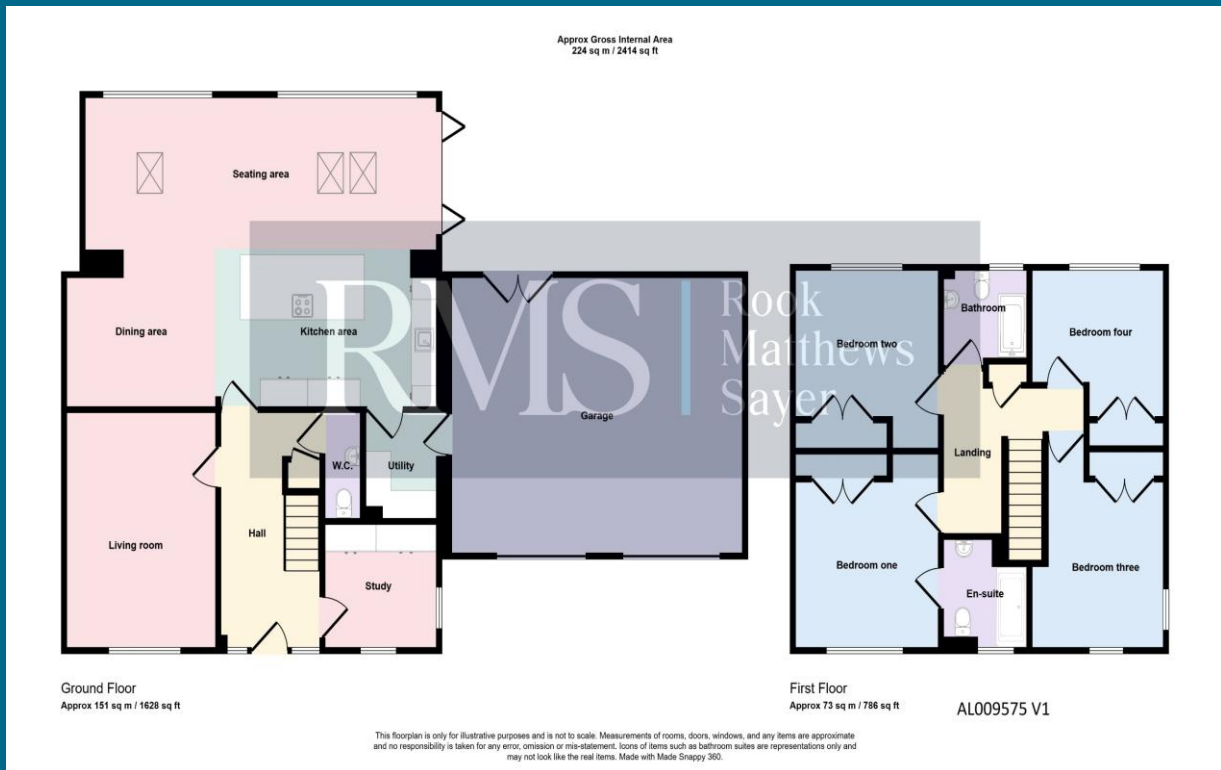
AL009575/DM/HH/13.05.2026/V.1

**T: 01665 510044**

Branch [alnwick@rmsestateagents.co.uk](mailto:alnwick@rmsestateagents.co.uk)

**RMS** | Rook  
Matthews  
Sayer





**Money Laundering Regulations** – intending purchasers will be asked to produce original identification documentation at a later stage and we would ask for your co-operation in order that there will be no delay in agreeing the sale. We will also use some of your personal data to carry out electronic identity verification. This is not a credit check and will not affect your credit score.

**Important Note:** Rook Matthews Sayer (RMS) for themselves and for the vendors or lessors of this property, whose agents they are, give notice that these particulars are produced in good faith, are set out as a general guide only and do not constitute part or all of an offer or contract. The measurements indicated are supplied for guidance only and as such must be considered incorrect. Potential buyers are advised to recheck the measurements before committing to any expense. RMS has not tested any apparatus, equipment, fixtures, fittings or services and it is the buyer's interests to check the working condition of any appliances. RMS has not sought to verify the legal title of the property and the buyers must obtain verification from their solicitor. No persons in the employment of RMS has any authority to make or give any representation or warranty whatever in relation to this property.



T: 01665 510044  
Branch alnwick@rmsestateagents.co.uk

**RMS** | Rook  
Matthews  
Sayer