



Halidon Walk | Blyth | NE24 4JY

£180,000

Presented to an Exceptional Show Home Standard, this stunning three-bedroom semi-detached home offers stylish interiors, a desirable southerly-facing rear garden, and a highly sought-after location ideal for modern family living. Occupying a prime position within a popular residential development and conveniently located close to the new train station, this impressive property combines contemporary design with everyday practicality, creating a home that is ready to move straight into and enjoy. From the moment you step inside, the attention to detail and immaculate presentation are immediately apparent. The welcoming entrance hall leads to an elegant lounge, beautifully styled and perfect for both relaxing and entertaining. To the rear, the superb kitchen dining room forms the true heart of the home, featuring a bright and sociable layout ideal for family life, hosting guests and everyday dining. A convenient ground-floor W.C. completes the ground floor accommodation. Upstairs, the quality continues with three beautifully presented bedrooms. The luxurious principal bedroom benefits from its own stylish en-suite shower room, while the remaining bedrooms are served by a contemporary family bathroom finished to an equally high standard. Externally, the property enjoys private off-road parking to the front, while the enclosed southerly-facing rear garden is a standout feature, enjoying excellent levels of natural sunlight throughout the day. Thoughtfully maintained and ideal for outdoor living, it provides the perfect setting for al fresco dining, entertaining guests, family gatherings or simply relaxing in a private and peaceful environment. Combining impeccable show home presentation, modern comforts, a sun-filled southerly-facing garden and excellent commuter links, this outstanding home delivers the perfect blend of style, convenience and family-friendly living. Early viewing is strongly recommended to fully appreciate the quality and lifestyle on offer. Interest in this property will be high call 01670 352900 or email Blyth@rmsestateagents.co.uk to arrange your viewing.

RMS | Rook
Matthews
Sayer



3



1



2

Gorgeous Semi Detached

Three Bedrooms

Downstairs W.C & En Suite

Off Street Parking To Front

Close To New Train Station

Gas Heating

Southerly Facing Rear Garden

Integrated Kitchen Appliances

For any more information regarding the property please contact us today

ENTRANCE: UPVC double glazed door.

ENTRANCE HALLWAY: Stairs to first floor, radiator.

DOWNSTAIRS CLOAKS/W.C.: Wash hand basin, low level w.c., radiator.

LOUNGE: (front): 12'02 x 14'21 (3.66m x 4.33m) Double glazed window to front, double radiator, built in storage cupboard with electrics.

KITCHEN: 15'30 x 8'71 (4.66m x 2.65m) Double glazed window to rear, range of wall, floor and drawer units with roll top work surfaces, co-ordinating sink and drainer unit with mixer taps, electric fan assisted oven with gas hob, extractor fan, integrated fridge freezer, washing machine and dish washer, spotlights, double glazed doors to rear garden.

FIRST FLOOR LANDING AREA: Built in storage cupboard, loft access.

LOFT: Partially boarded

BEDROOM ONE 11'92 x 9'53 (3.63m x 2.90m) max. measurements into recess.
Double glazed window to front, built in cupboard, radiator, panelled walls.

EN SUITE: Double glazed window to front, low level w.c, wash hand basin, shoe cubicle, spotlights, part tiled walls, radiator

BEDROOM TWO: 7'56 x 9'19 (2.30m x 2.80m) Double glazed window to rear, radiator

BEDROOM THREE: 7'59 x 9'19 (2.31m x 1.16m) Double glazed window, fitted wardrobes, radiator

BATHROOM: Double glazed frosted window to side, white suite comprising panelled bath, pedestal wash hand basin, low level w.c, spotlights, part tiled walls, radiator

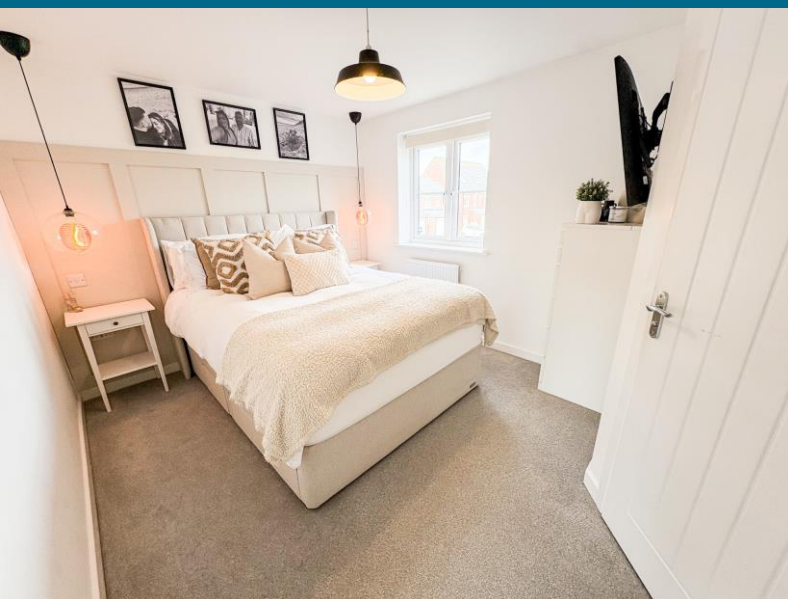
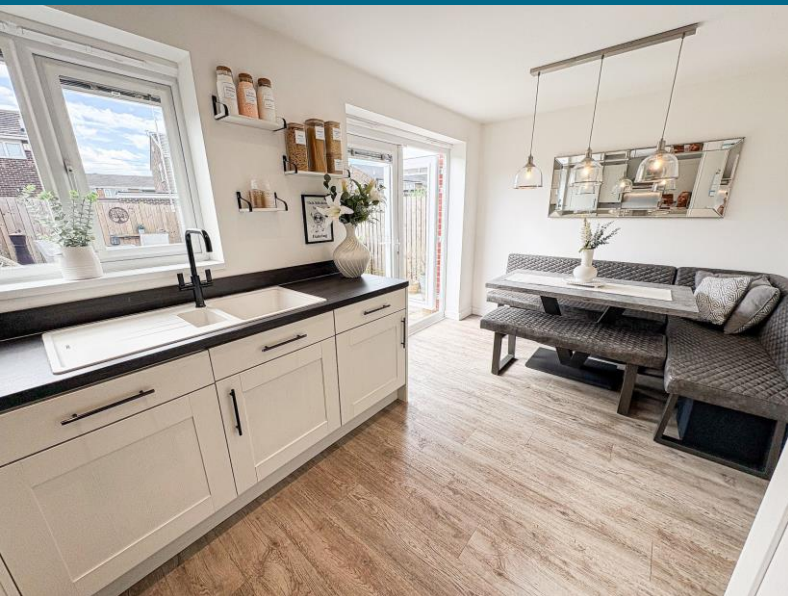
FRONT GARDEN: Driveway with off street parking.

REAR GARDEN: Fenced boundaries, laid mainly to lawn, southerly facing, patio area, garden shed.

T: 01670 352900

Blyth@rmsestateagents.co.uk

RMS | Rook
Matthews
Sayer



PRIMARY SERVICES SUPPLY

Electricity: Mains

Water: Mains

Sewerage: Mains

Heating: Mains

Broadband: Fibre To Premises

Mobile Signal Coverage Blackspot: No

Parking: Off Street Parking to Front

MINING

The North East region is famous for its rich mining heritage and therefore it will be beneficial to conduct a mining search. Confirmation should be sought from a conveyancer as to its effect on the property, if any.

TENURE

Freehold – It is understood that this property is freehold, but should you decide to proceed with the purchase of this property, the Tenure must be verified by your Legal Adviser

Estate Fees around £82.41 per annum

COUNCIL TAX BAND: B

EPC RATING: B

BL00012176.AJ.20.6.26.V.2



T: 01670 352900

Blyth@rmsestateagents.co.uk

RMS | Rook
Matthews
Sayer



Important Note: Rook Matthews Sayer (RMS) for themselves and for the vendors or lessors of this property, whose agents they are, give notice that these particulars are produced in good faith, are set out as a general guide only and do not constitute part or all of an offer or contract. The measurements indicated are supplied for guidance only and as such must be considered incorrect. Potential buyers are advised to recheck the measurements before committing to any expense. RMS has not tested any apparatus, equipment, fixtures, fittings or services and it is the buyer's interests to check the working condition of any appliances. RMS has not sought to verify the legal title of the property and the buyers must obtain verification from their solicitor. No persons in the employment of RMS has any authority to make or give any representation or warranty whatever in

Money Laundering Regulations – intending purchasers will be asked to produce original identification documentation at a later stage and we would ask for your co-operation in order that there will be no delay in agreeing the sale. We will also use some of your personal data to carry out electronic identity verification. This is not a credit check and will not affect your credit score.

