



High Mickley | Stocksfield | NE43

**Offers Over £580,000**

**RMS** | Rook  
Matthews  
Sayer



4



2



2

**Detached Scandinavian-Style Bungalow**

**Solar Panels**

**Four Double Bedrooms**

**Semi-Rural Location**

**Stunning South-Facing Gardens**

**Spacious Single-Level Living**

**Detached Garage & Extensive Parking**

**Large Conservatory**

For any more information regarding the property please contact us today.



T: 01434 601616

hexham@rmsestateagents.co.uk

**RMS** | Rook  
Matthews  
Sayer



Elegant detached Scandinavian-style bungalow occupying an elevated position with panoramic views across the Tyne Valley. Set within an extended south-facing plot with beautifully landscaped gardens, the property also benefits from a substantial detached garage and generous driveway parking for multiple vehicles.

Offering spacious and versatile accommodation throughout, the home includes four double bedrooms, two bathrooms, extensive built-in storage and an impressive timber conservatory. Triple-glazed windows throughout enhance both comfort and energy efficiency, while almost every room enjoys views of the surrounding gardens or valley.

The welcoming reception hallway is accessed via an extra-wide front door designed with wheelchair accessibility in mind. Extending through the centre of the property, the hallway provides access to all principal rooms.

The lounge is centred around a feature fireplace with multi-fuel stove and enjoys exceptional panoramic views through four large windows overlooking the valley.

Double doors open into the substantial conservatory, a superb timber-built addition with extensive glazing, tiled flooring and ample space for both seating and dining areas. Further doors lead directly onto the rear patio and gardens, creating an ideal space for entertaining or relaxing while enjoying the surrounding views.

The dining room is accessed from the lounge via a wide opening and three steps. It comfortably accommodates a full dining suite. South-facing windows fill the room with natural light and overlook the beautifully maintained gardens.

The kitchen is accessible from the hallway, dining room and rear patio, and is fitted with an extensive range of wall and base units, marble worktops and space for a full range of appliances. Large windows provide excellent natural light and attractive garden views.

High Mickley is conveniently situated above the popular village of Stocksfield in the heart of the Tyne Valley, enjoying a peaceful semi-rural setting while remaining well connected. The area offers excellent road and rail links into Newcastle upon Tyne, with nearby access to the A69 and regular train services from Stocksfield station, making it ideal for commuters. Surrounded by beautiful Northumberland countryside, the village is also well placed for walking, cycling and outdoor pursuits, while nearby Stocksfield provides a range of local amenities including shops, cafés, pubs, schools and leisure facilities.

Externally, the property is very private from the front, with strategically placed hedging and shrubbery. Double gates open up to the sweeping tarmac driveway offering parking for many cars as well as the substantial detached double garage with remote controlled electric up-and-over door. The garage also offers lighting, water and plenty of overhead storage to the eaves.

No photographs or pretty descriptions will even begin to explain how beautiful the gardens are here. Previous owners of the property have extended the south facing gardens by purchasing a portion of the fields behind, creating a large space which has been lovingly nurtured into what you see today. Designed around clover leaf, the garden is cleverly split into sections with curved borders, shrubs and well-tended hedging. Pond, water feature, patios, sitting areas, vegetable plots, triple composting frames, pergola and dog paddock are all overlooked by the beautiful summer house. The summer house takes pride of place at the head of the garden, soaked in sun and with electricity supply, it is the perfect place to take in the outstanding views throughout the day and long into the evening. Guests will love to be entertained here and the raised patio area makes it ideal for barbecuing or maybe even a hot tub.

## INTERNAL DIMENSIONS

Kitchen: 15'11 max x 13'5 max (4.85m x 4.09m)

Dining Room: 12'9 max x 11'5 max (3.89m x 3.48m)

Lounge: 21'5 max x 11'8 max (6.53m x 3.56m)

Conservatory: 12'6 max x 9'2 max (3.81m x 2.79m)

Bedroom One: 13'10 into robes x 11'3 max (4.22m x 3.43m)

Ensuite: 7'10 max x 4'10 max (2.39m x 1.47m)

Bedroom Two: 13'10 into robes x 9'1 max (4.22m x 2.77m)

Bedroom Three: 16'5 into robes x 11'5 max (5.00m x 3.48m)

Bedroom Four: 12'8 max x 11'5 max (3.86m x 3.48m)

Bathroom: 7'10 max x 7'3 max (2.39m x 2.21m)

## PRIMARY SERVICES SUPPLY

Electricity: Mains & Solar Panels

Water: Mains

Sewerage: Mains

Heating: Electric & Wood Burner

Broadband: ADSL Copper Wire

Mobile Signal Coverage Blackspot: No

Parking: Garage & Driveway

## MINING

The North East region is famous for its rich mining heritage and therefore it will be beneficial to conduct a mining search. Confirmation should be sought from a conveyancer as to its effect on the property, if any.

## TENURE

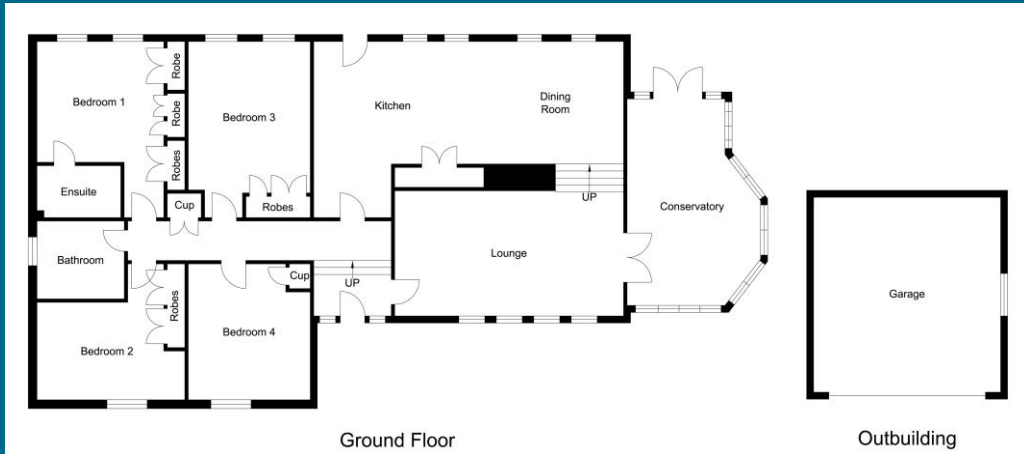
Freehold – It is understood that this property is freehold, but should you decide to proceed with the purchase of this property, the Tenure must be verified by your Legal Adviser

COUNCIL TAX BAND: G

EPC RATING: TBC

HX0006435.JR.SM.05.05.2026.V.3





EPC TBC



**Important Note:** Rook Matthews Sayer (RMS) for themselves and for the vendors or lessors of this property, whose agents they are, give notice that these particulars are produced in good faith, are set out as a general guide only and do not constitute part or all of an offer or contract. The measurements indicated are supplied for guidance only and as such must be considered incorrect. Potential buyers are advised to recheck the measurements before committing to any expense. RMS has not tested any apparatus, equipment, fixtures, fittings or services and it is the buyer's interests to check the working condition of any appliances. RMS has not sought to verify the legal title of the property and the buyers must obtain verification from their solicitor. No persons in the employment of RMS has any authority to make or give any representation or warranty whatever in relation to this property.

**Money Laundering Regulations** – intending purchasers will be asked to produce original identification documentation at a later stage and we would ask for your co-operation in order that there will be no delay in agreeing the sale. We will also use some of your personal data to carry out electronic identity verification. This is not a credit check and will not affect your credit score.