



Young Drive | Dinnington | NE13

£185,000 Offers Over

This two-bedroom semi-detached house is for sale in Newcastle upon Tyne and is suited to first-time buyers seeking a modern home with practical features and good local amenities.

RMS | Rook
Matthews
Sayer



2



1



1

SEMI DETACHED

SPACIOUS LIVING

MODERN KITCHEN

TWO DOUBLE BEDROOMS

FAMILY BATHROOM

**PATIO AND LAWNED
GARDEN**

For any more information regarding the property please contact us today

PROPERTY DESCRIPTION: The ground floor includes a reception room with large windows and French doors opening directly onto the garden, providing a pleasant outlook and easy access to outdoor space. The kitchen benefits from natural light, and there is also a WC on this level. Upstairs, there are two double bedrooms, including a master bedroom, along with a bathroom featuring a shower over bath and a heated towel rail. The property has an EPC rating of B and is in Council Tax Band B. Parking is available, and the garden offers private outdoor space.

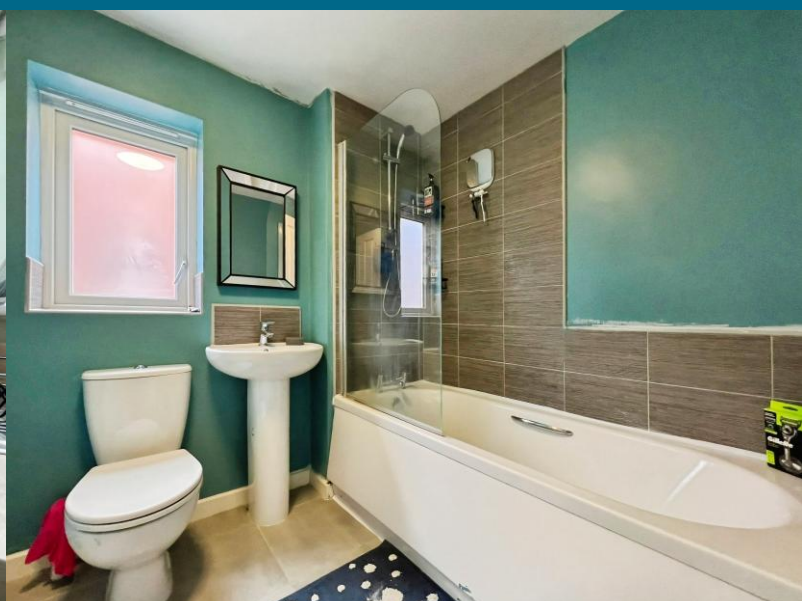
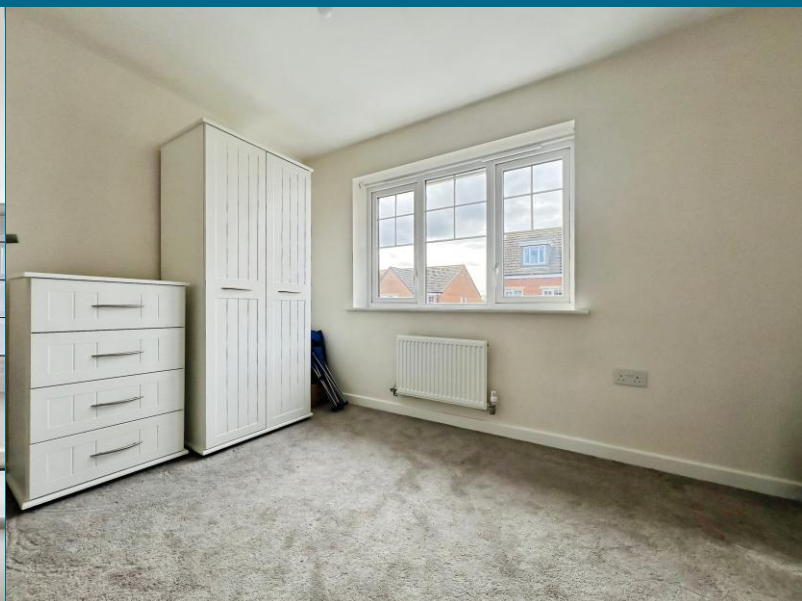
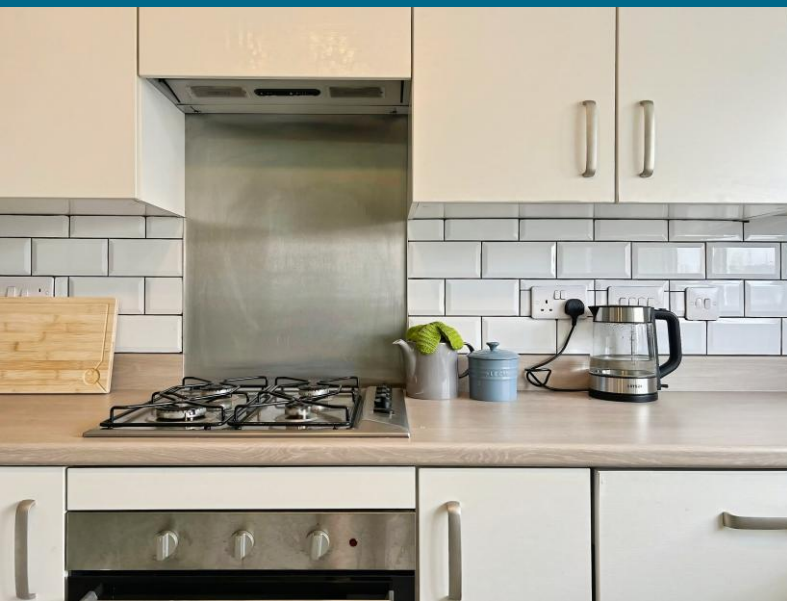
The location provides access to local amenities including shops, supermarkets and everyday services in the wider Newcastle Great Park and Kingston Park areas. Nearby schools include a range of primary and secondary options within a short drive, making the setting suitable for households looking for education provision close by.

Public transport links are available via local bus services into Newcastle city centre and surrounding districts. The nearest mainline rail services are from Newcastle Central Station, offering routes to Edinburgh, York and London, with journey times to London from around three hours. Road links via the A1 and A19 give convenient access across Tyneside and to the wider North East, including coastal destinations and regional employment centres.

T: 01661 860 228

ponteland@rmsestateagents.co.uk

RMS | Rook
Matthews
Sayer



Living Room:
11'10" (max) x 13'00" (max) - 3.61m x 3.96m

Kitchen:
12'00" x 9'10" - 3.66m x 2.99m

W.C.

Bedroom One:
8'10" x 13'03" - 2.69m x 4.04m

Bedroom Two:
8'07" x 13'03" (max) - 2.62m x 4.04m

Bathroom:
6'08" x 6'05" - 2.03m x 1.96m

PRIMARY SERVICES SUPPLY

Electricity: Mains
Water: Mains
Sewerage: Mains
Heating: Mains Gas
Broadband: Fibre
Mobile Signal Coverage Blackspot: No
Parking: Driveway

MINING

The North East region is famous for its rich mining heritage and therefore it will be beneficial to conduct a mining search. Confirmation should be sought from a conveyancer as to its effect on the property, if any.

TENURE

Freehold - It is understood that this property is freehold, but should you decide to proceed with the purchase of this property, the Tenure must be verified by your Legal Adviser

COUNCIL TAX BAND: B

EPC RATING: B

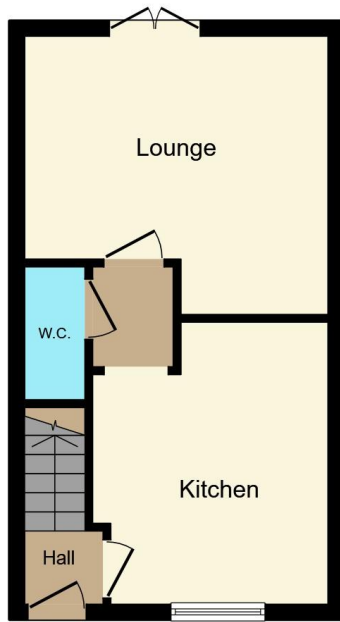
P00007610.SD.SD.20/4/26.V.1



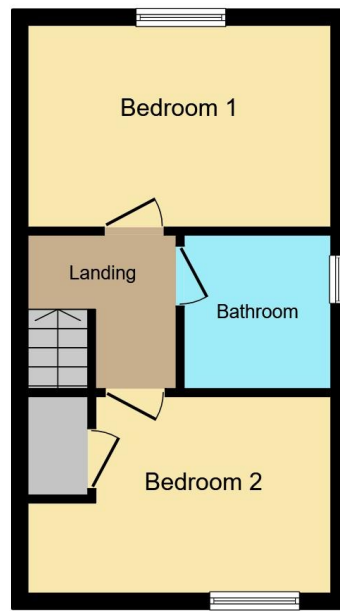
T: 01661 860 228

ponteland@rmsestateagents.co.uk

RMS | Rook
Matthews
Sayer



Ground Floor



First Floor

This floor plan is for illustrative purposes only. It is not drawn to scale. Any measurements, floor areas (including any total floor area), openings and orientations are approximate. No details are guaranteed, they cannot be relied upon for any purpose and do not form any part of any agreement. No liability is taken for any error, omission or misstatement. A party must rely upon its own inspection(s). Powered by www.Propertybox.io

FLOORPLAN

Score	Energy rating	Current	Potential
92+	A		97 A
81-91	B	83 B	
69-80	C		
55-68	D		
39-54	E		
21-38	F		
1-20	G		