



Thirlmere Avenue | Marden Estate | NE30 3UN

£340,000

Showcasing a beautiful open aspect on the highly sought after Thirlmere Avenue, within Marden Estate. This lovely family home has been nurtured by the current family for many, many years and is being reluctantly sold. Available with no onward chain and within catchment for popular local schools, shops, amenities, bus routes and a short drive to Cullercoats Metro, Beach and Whitley Bay town centre, what's not to love!! With a spacious entrance lobby and hallway, downstairs cloaks/w.c., front facing lounge enjoying the aspect with modern, electric fire, separate dining room, conservatory with French doors opening out to the rear garden, stylish, re-fitted kitchen with integrated appliances, separate utility with access to the garden and into the attached garage. First floor landing area, three excellent sized bedrooms, all with fitted wardrobes, contemporary re-fitted shower room with separate w.c. Large, enclosed, low maintenance rear garden with patios, mature shrubs and privacy hedging, shed, outside tap. to the front there is also a large garden area, landscaped and well maintained with superb sized driveway and garage.

RMS | Rook
Matthews
Sayer



3



3



1

Sought After Semi-Detached Home

Close to Popular Schools

Short Drive to Cullercoats Beach

Large Garden, Drive and Garage

Entrance Lobby and Hallway

Two Separate Reception Rooms

Conservatory, Stylish Re-Fitted Kitchen

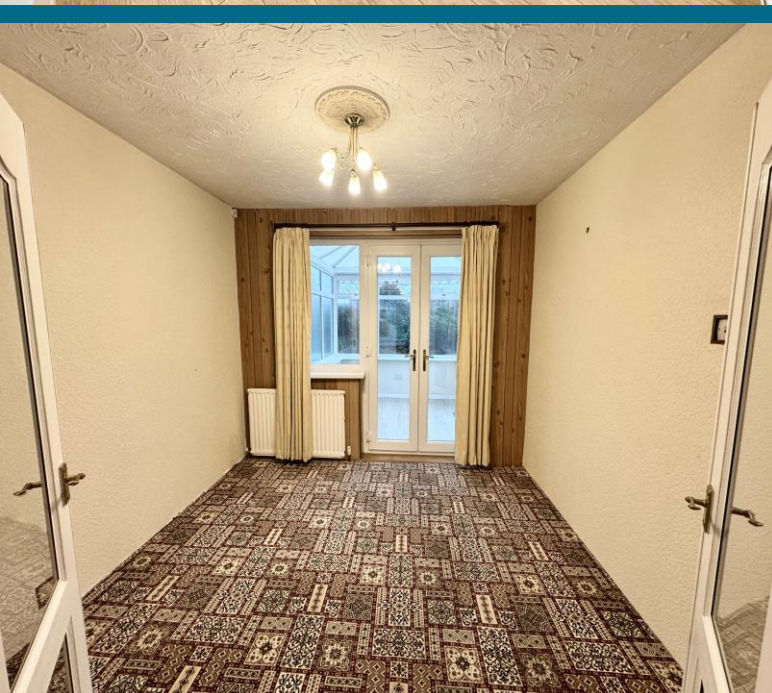
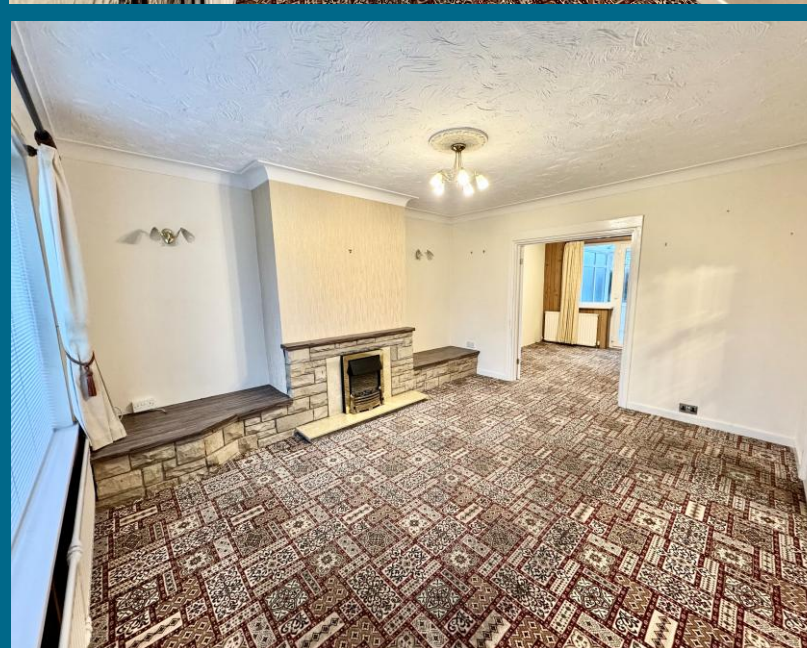
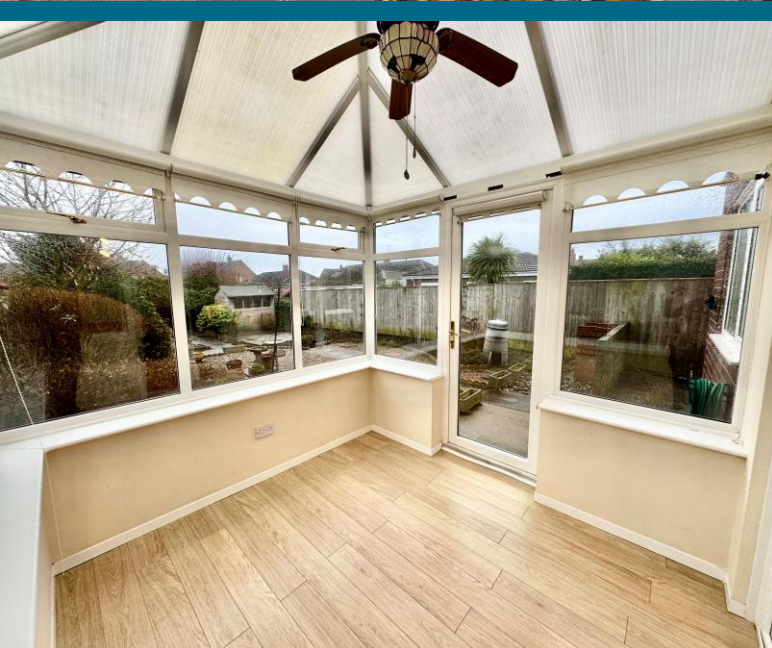
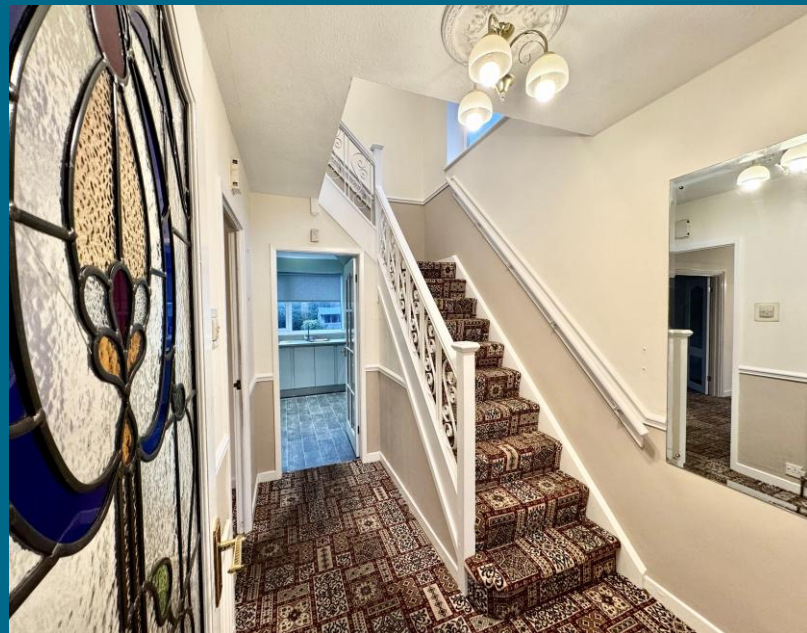
Three Bedrooms, Bathroom



T: 0191 2463666

whitleybay@rmsestateagents.co.uk

RMS | Rook
Matthews
Sayer



ENTRANCE LOBBY: door with leaded light insert to:

ENTRANCE HALLWAY: Impressive hallway with turned staircase to the first floor, panelling to walls, door to:

DOWNSTAIRS CLOAKS/WC.: low level w.c., hand washbasin, double glazed window, laminate flooring

LOUNGE: (front): 15'1 x 13'0, (4.59m x 3.96m), into alcoves, feature brick fireplace, modern electric fire, radiator, coving to ceiling, double glazed window enjoying open aspect, fitted wall lights, double doors through to:

DINING ROOM: (rear): 11'0 x 10'8, (3.35m x 3.25m), double glazed doors into conservatory, radiator

CONSERVATORY: 9'2 x 8'0, (2.79m x 2.44m), beautifully overlooking the rear garden and with double glazed French door opening out, laminate flooring

KITCHEN: (rear): 10'8 x 9'0, (3.25m x 2.74m), a stunning, re-fitted family kitchen incorporating a range of stylish base, wall and drawer units, co-ordinating worktops, single drainer sink unit with mixer taps, integrated eye level electric oven, gas hob, integrated fridge and freezer, pantry cupboard, double glazed window, spotlights to ceiling, tiled floor, door to:

UTILITY ROOM: (rear): 5'6 x 4'5, (1.68m x 1.34m), plumbed for automatic washing machine, door out to the garden, door to garage

GARAGE: 18'2 x 7'6, (5.53m x 2.29m), combination boiler, up and over garage door, coal cupboard

FIRST FLOOR LANDING AREA: double glazed window, door to:

BEDROOM ONE: (front): 14'8 x 10'9, (4.47m x 3.28m), including depth of fitted wardrobes, providing ample hanging and storage space, radiator, double glazed window enjoying views over the front open aspect

BEDROOM TWO: (rear): 11'7 x 11'0, (3.53m x 3.35m), excluding depth of wardrobes, double glazed window, fitted wardrobes providing ample hanging and storage space, radiator

BEDROOM THREE: (front): 10'0 x 8'7, (3.05m x 2.62m), radiator, double glazed window overlooking front open aspect, fitted wardrobes

SHOWER ROOM: A stylish, re-fitted shower room, comprising of, shower cubicle, electric shower, pedestal washbasin, airing cupboard, loft access, double glazed window, radiator, feature panelling and tiling

SEPARATE W.C.: low level w.c. with push button cistern, double glazed window, fully tiled walls

EXTERNALLY: A gorgeous, low maintenance rear garden of excellent proportions. Lovingly thought out by the current owners and providing superb outdoor space. With paving, patio areas, shed, feature shrubs and privacy hedging, brick-built BBQ, outside tap. To the front there is a landscaped garden area, long double length driveway and garage

PRIMARY SERVICES SUPPLY

Electricity: Mains

Water: Mains

Sewerage: Mains

Heating: Mains/Gas

Broadband: None

Mobile Signal Coverage Blackspot: No

Parking: Garage/Driveway

MINING

The North East region is famous for its rich mining heritage and therefore it will be beneficial to conduct a mining search. Confirmation should be sought from a conveyancer as to its effect on the property, if any.

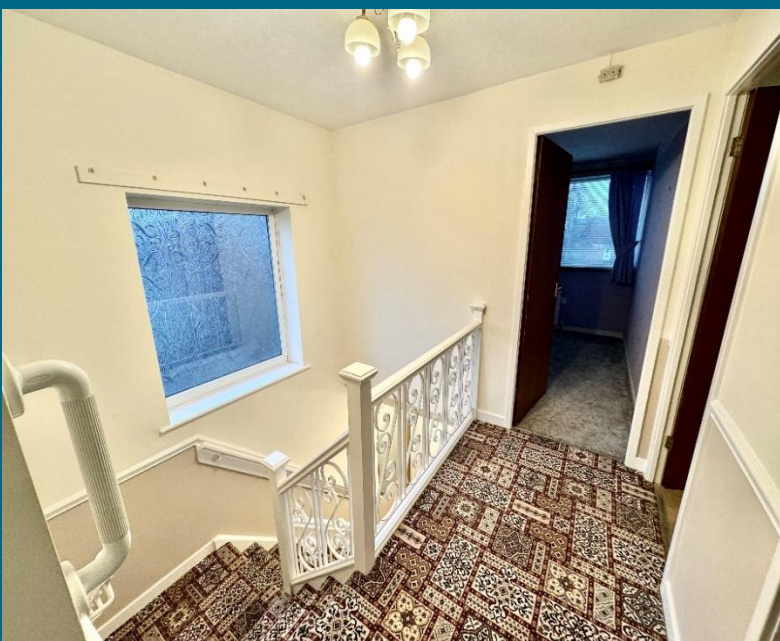
TENURE

Freehold – It is understood that this property is freehold, but should you decide to proceed with the purchase of this property, the Tenure must be verified by your Legal Adviser

Council Tax Band: C

EPC Rating: TBC

WB3589.AI.DB.06.02.2026 .V.1



AWAITING FLOORPLAN

AWAITING EPC RATING

Important Note: Rook Matthews Sayer (RMS) for themselves and for the vendors or lessors of this property, whose agents they are, give notice that these particulars are produced in good faith, are set out as a general guide only and do not constitute part or all of an offer or contract. The measurements indicated are supplied for guidance only and as such must be considered incorrect. Potential buyers are advised to recheck the measurements before committing to any expense. RMS has not tested any apparatus, equipment, fixtures, fittings or services and it is the buyer's interests to check the working condition of any appliances. RMS has not sought to verify the legal title of the property and the buyers must obtain verification from their solicitor. No persons in the employment of RMS has any authority to make or give any representation or warranty whatever in relation to this property.



Money Laundering Regulations - intending purchasers will be asked to produce original identification documentation at a later stage and we would ask for your co-operation in order that there will be no delay in agreeing the sale. We will also use some of your personal data to carry out electronic identity verification. This is not a credit check and will not affect your credit score.