



Stonecross | Ashington | NE63 8EE

£85,000

Three-bedroom terraced property in central Ashington close to all local amenities. The property briefly comprises of a large living dining room and kitchen on the ground floor while to the first floor you will find three good sized bedrooms and a family bathroom. Externally there is a low maintenance front garden and a rear garden laid mainly to lawn.

ROOK
MATTHEWS
SAYER



3



1



1

Three-bedroom terrace

Small garden

Double glazing

Rear yard

Living room

Freehold

Porch

EPC: TBC

For any more information regarding the property please contact us today

ENTRANCE: Porch with double glazing and UPVC Entrance door.

LOUNGE: 17'4 (5.28) X 14'2 (4.32)

Double glazed front patio doors, single radiator, fire surround, television point, coving to the ceiling.

KITCHEN AREA: 7'5 (2.26) X 11'8 (3.56)

KITCHEN/DINING AREA: 9'5 (2.87) X 5'5 (1.65)

Double glazed rear window, double radiator, range of wall, floor and drawer units with co ordinating roll edge work surfaces, stainless steel sink unit with mixer tap, tiled splashbacks, space for cooker, space for fridge/freezer, tiling to floor, double glazed rear door.

FIRST FLOOR LANDING: Loft access, built in storage cupboard

BEDROOM ONE: 14'4 (4.37) X 9'10 (2.99)

Double glazed front window, single radiator.

BEDROOM TWO: 7'3 (2.21) X 14'8 (4.47)

Double glazed front window, single radiator

BEDROOM THREE: 7'3 (2.21) X 8'7 (2.62)

Double glazed rear window, single radiator

BATHROOM/WC: 4-piece white suite comprising of:

Panelled bath, pedestal wash hand basin, shower cubicle, low level wc, double glazed rear window, single radiator, part tiling to walls, tiled flooring.

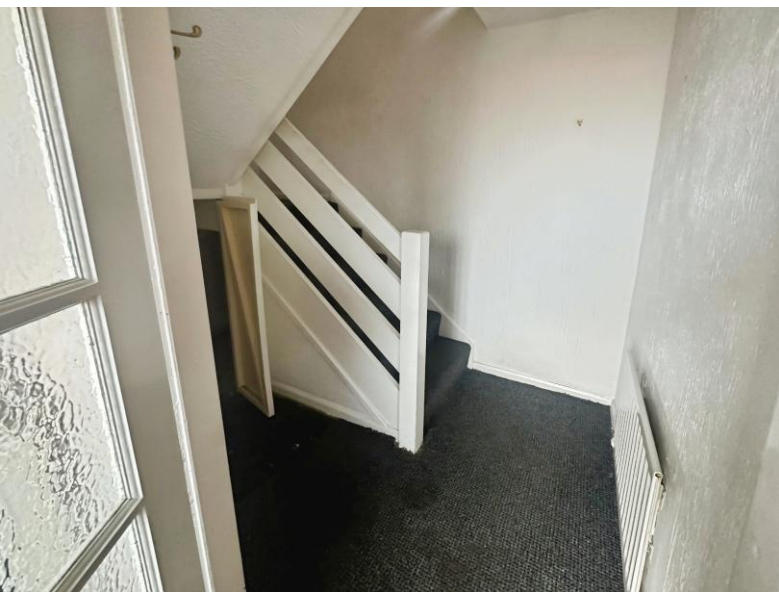
FRONT GARDEN: laid mainly to lawn

REAR: Private yard to rear

T: 01670 850 850

Ashington@rmsestateagents.co.uk

ROOK
MATTHEWS
SAYER



PRIMARY SERVICES SUPPLY

Electricity: TBC

Water: TBC

Sewerage: TBC

Heating: TBC

Broadband: TBC

Mobile Signal Coverage Blackspot: TBC

Parking: Yard to rear

MINING

The North East region is famous for its rich mining heritage and therefore it will be beneficial to conduct a mining search. Confirmation should be sought from a conveyancer as to its effect on the property, if any. The North East region is famous for its rich mining heritage. We have been advised that the property is known to be at risk from mining activities in the locality, therefore please speak with your conveyancer for further information.

TENURE

Freehold - It is understood that this property is freehold, but should you decide to proceed with the purchase of this property, the Tenure must be verified by your Legal Adviser

COUNCIL TAX BAND: TBC

EPC RATING: TBC

GD/FG AS00010347 VERSION 2



T: 01670 850 850

Ashington@rmsestateagents.co.uk

ROOK
MATTHEWS
SAYER



EPC RATING
TBC

Important Note: Rook Matthews Sayer (RMS) for themselves and for the vendors or lessors of this property, whose agents they are, give notice that these particulars are produced in good faith, are set out as a general guide only and do not constitute part or all of an offer or contract. The measurements indicated are supplied for guidance only and as such must be considered incorrect. Potential buyers are advised to recheck the measurements before committing to any expense. RMS has not tested any apparatus, equipment, fixtures, fittings or services and it is the buyer's interests to check the working condition of any appliances. RMS has not sought to verify the legal title of the property and the buyers must obtain verification from their solicitor. No persons in the employment of RMS has any authority to make or give any representation or warranty whatever in

Money Laundering Regulations – intending purchasers will be asked to produce original identification documentation at a later stage and we would ask for your co-operation in order that there will be no delay in agreeing the sale. We will also use some of your personal data to carry out electronic identity verification. This is not a credit check and will not affect your credit score.

