



Kendal Rise | Bedlington | NE226PB

Offers In Excess Of £430,000

This magnificent family home will wow any person wishing to live in the popular Hazelemere estate in Bedlington. Located in a cul de sac on the bottom of the estate this six bedrooomed home has had the ground floor reconfigured and updated by the current owners to make an amazing living space. The accommodation is over three floors and has six bedrooms two with en-suites, family bathroom, downstairs cloaks and open plan kitchen diner, utility room, living room and sun room. Externally the gardens are landscaped and make perfect entertaining space. It also offers double garage and parking. This home must be viewed to appreciate its beauty.

ROOK
MATTHEWS
SAYER



6



2



3

Detached Family Home

Double Garage

Six Bedrooms

South Facing Landscaped Garden

Sun Room

Freehold

Popular Hazelmere Estate

EPC: TBC/ Council Tax:E

For any more information regarding the property please contact us today

Entrance

Composite door.

Entrance Hallway

Stairs to first floor landing, laminate, flooring storage.

Downstairs Wc 3.29ft x 4.79ft (1.00m x 1.45m)

Low level wc, wall mounted wash hand basin, laminate flooring, extractor fan, double glazed window, part tiling to walls, single radiator, spotlights.

Lounge 11.32ft x 11.83ft (3.45m x 3.60m)

Double glazed window to front, double radiator, television point.

Kitchen/Dining Room 9.84ft x 27.13ft (2.99m x 8.26m)

Double glazed window to front, wall mounted radiator, fitted with a range if wall, floor and drawer units with co-ordinating roll edge work surfaces, co-ordinating sink unit and drainer with mixer tap, tiled splash backs, built in double oven, induction 5 ring hob, wine cooler, integrated fridge freezer and dishwasher, laminate flooring, pantry cupboard, spotlights, bifold doors to sun room.

Utility Room 10.36ft x 8.25ft (3.15m x 2.51m)

Double glazed window to rear, fitted wall and base units, stainless steel sink unit, integrated fridge freezer, washing machine and tumble dryer, wall mounted radiator, laminate flooring.

Sun Room 16.85ft x 16.15ft (5.13m x 4.92m)

Dwarf wall, double glazed windows, Velux and woof windows, fireplace, log burner.

First Floor Landing

Built in storage cupboard.

(First Floor)

Landing

Built in storage cupboard.

Bedroom Three 10.47ft x 10.19ft (3.19m x 3.10m)

Double glazed window to rear, single radiator, fitted wardrobes and drawers, television point.

En-Suite 7.12ft x 5.29ft (2.17m x 1.61m)

Double glazed window to rear, low level wc, pedestal wash hand basin, double shower cubicle, heated towel rail, part tiling to walls.

Bedroom Four 10.40ft x 10.13ft (3.16m x 3.08m)

Double glazed window to front, single radiator, fitted wardrobes and drawers, television point.

Bedroom Five 10.37ft x 7.07ft into wardrobes (3.16m x 2.15m)

Double glazed window to front, single radiator, fitted wardrobes and drawers, television point.

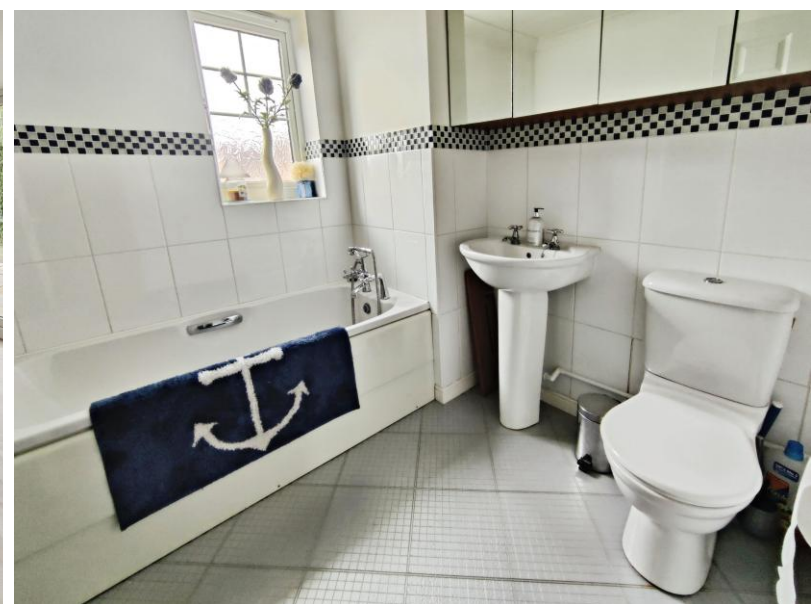
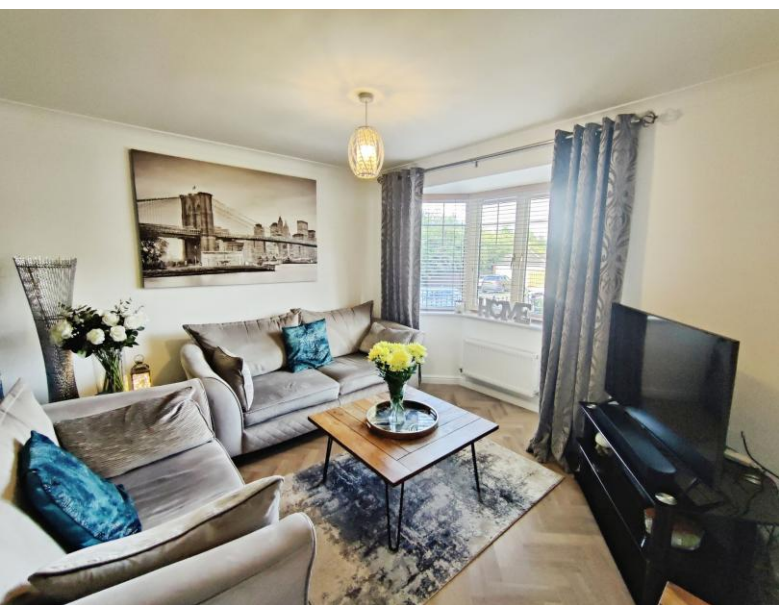
Bedroom Six 12.26ft x 8.57ft (3.73m x 2.61m)

Double glazed window to rear, fitted wardrobes, double radiator.

T: 01670531114

Bedlington@rmsestateagents.co.uk

**ROOK
MATTHEWS
SAYER**



Bathroom 6.98ft x 7.07ft (2.12m x 2.15m)

Three piece white suite comprising of; panelled bath, pedestal wash hand basin, low level wc, spotlights, double glazed window to front, heated towel rail, part tiling to walls, laminate flooring, extractor fan.

Second Floor

Bedroom One 15.72ft x 10.07ft (4.79m x 3.06ft)

Double glazed window to front, two velux windows (one side & one rear) double radiator, fitted drawers, television point.

En-Suite 7.11ft x 5.72ft (2.16m x 1.74m)

Velux window, low level wc, wash hand basin, double walk in shower, extractor fan, tiling to walls, heated towel rail, spotlights, tiling to floor.

Bedroom Two 18.07ft x 6.34ft into wardrobes (5.50m x 1.93m)

Double glazed window to front, fitted wardrobes, Velux window

External

Front garden laid mainly to lawn, bushes and shrubs, flower borders, driveway. South facing landscaped rear garden laid mainly to lawn, patio area, flower beds, bushes and shrubs, screen fencing, pergola, power sockets.

Garage

Detached double garage, electric door, power and lighting.

Electricity: Mains

Water: Mains

Sewerage: Mains

Heating: Mains

Broadband: ADSL

Mobile Signal Coverage Blackspot: No

Parking: double garage & driveway

MINING

The North East region is famous for its rich mining heritage and therefore it will be beneficial to conduct a mining search. Confirmation should be sought from a conveyancer as to its effect on the property, if any.

ACCESSIBILITY

Level access, wet room and wide doorways.

TENURE

Freehold - It is understood that this property is freehold, but should you decide to proceed with the purchase of this property, the Tenure must be verified by your Legal Adviser

COUNCIL TAX BAND: E

EPC RATING: TBC

BD008624SB/SJ01.09.2025.V.2



01670531114

Bedlington@rmsestateagents.co.uk

ROOK
MATTHEWS
SAYER



"DoubleClick Insert Picture"
EPC To follow

Important Note: Rook Matthews Sayer (RMS) for themselves and for the vendors or lessors of this property, whose agents they are, give notice that these particulars are produced in good faith, are set out as a general guide only and do not constitute part or all of an offer or contract. The measurements indicated are supplied for guidance only and as such must be considered incorrect. Potential buyers are advised to recheck the measurements before committing to any expense. RMS has not tested any apparatus, equipment, fixtures, fittings or services and it is the buyer's interests to check the working condition of any appliances. RMS has not sought to verify the legal title of the property and the buyers must obtain verification from their solicitor. No persons in the employment of RMS has any authority to make or give any representation or warranty whatever in

Money Laundering Regulations – intending purchasers will be asked to produce original identification documentation at a later stage and we would ask for your co-operation in order that there will be no delay in agreeing the sale. We will also use some of your personal data to carry out electronic identity verification. This is not a credit check and will not affect your credit score.



T: 01670531114

Bedlington@rmsestateagents.co.uk

ROOK
MATTHEWS
SAYER