



Maidens Croft

Hexham

- No Upper Chain
- New Kitchen
- New Shower Room
- Two Double Bedrooms
- Retirement Development
- Council Tax Band: C

Offers Over £ 150,000

01434 601616
46 Priestpopple, Hexham NE46 1PQ

ROOK
MATTHEWS
SAYER

www.rookmatthewssayer.co.uk
hexham@rmsestateagents.co.uk

Maidens Croft

Hexham

Fully refurbished first floor apartment is new to the sales market within Maidens Croft, Hexham. This two bedroom apartment boasts spacious living, modern kitchen and shower room and two generous bedrooms, all situated within well laid out and maintained gardens in a development purpose built for buyers of 55 years or over. The Maidens Croft development is located in a sought after area of Hexham, a short walk for shopping and facilities.

The property has gas central heating briefly comprises communal entrance with secure entry; staircase leading to apartment; reception hall; two bedrooms; bathroom; lounge and kitchen. There are very well maintained communal gardens and parking.

Communal Entrance:

With secure entry system; staircase leading to first floor.

Reception Hall:

Large built-in storage cupboard; loft access.

Lounge: 15'5(4.70m) x 11'4(3.45m)

Bright and spacious with two windows; radiator.

Kitchen: 10'0(3.05m) x 7'0(2.13m)

Fitted with a range of floor and wall cabinets; contrasting work surfaces with splash back ceramic tiling; stainless steel sink unit and drainer; plumbing for washing machine; space for cooker and fridge; window.

Bedroom One: 7'10(2.39m) x 11'0(3.35m)

Window; radiator.

Bedroom Two: 10'8(3.25m) x 10'0(3.05m)

Sliding mirror fronted fitted wardrobes; radiator.

Bathroom:

Comprising walk-in shower; pedestal wash hand basin; low-level WC; radiator; frosted glass window.

Externally:

Communal gardens and parking.

TENURE

Leasehold. It is understood that this property is leasehold. Should you decide to proceed with the purchase of this property, the Tenure and associated details and costs must be verified by your Legal Advisor before you expend costs.

Length of Lease: 999 years from 1 January 1987

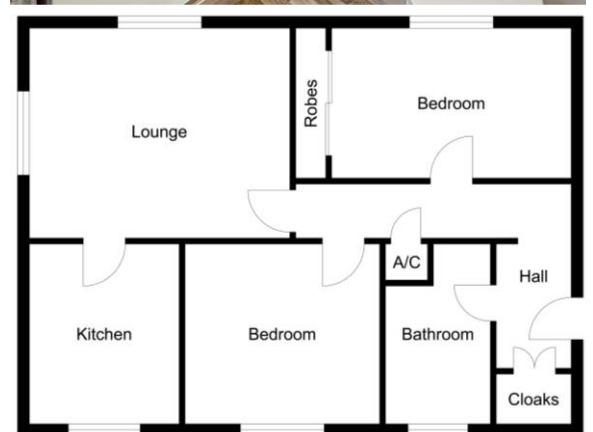
Ground Rent: £[xx] per [month/annum]

Service Charge: £[xx] per [month/annum]

Council Tax Band: C

EPC Rating: C

HX00005149.SD.SD.06.12.23.V.1



Important Note: Rook Matthews Sayer (RMS) for themselves and for the vendors or lessors of this property, whose agents they are, give notice that these particulars are produced in good faith, are set out as a general guide only and do not constitute part or all of an offer or contract. The measurements indicated are supplied for guidance only and as such must be considered incorrect. Potential buyers are advised to recheck the measurements before committing to any expense. RMS has not tested any apparatus, equipment, fixtures, fittings or services and it is the buyer's interests to check the working condition of any appliances. RMS has not sought to verify the legal title of the property and the buyers must obtain verification from their solicitor. No persons in the employment of RMS has any authority to make or give any representation or warranty whatever in relation to this property.

Money Laundering Regulations – intending purchasers will be asked to produce original identification documentation at a later stage and we would ask for your co-operation in order that there will be no delay in agreeing the sale. We will also use some of your personal data to carry out electronic identity verification. This is not a credit check and will not affect your credit score.

16 Branches across the North-East

