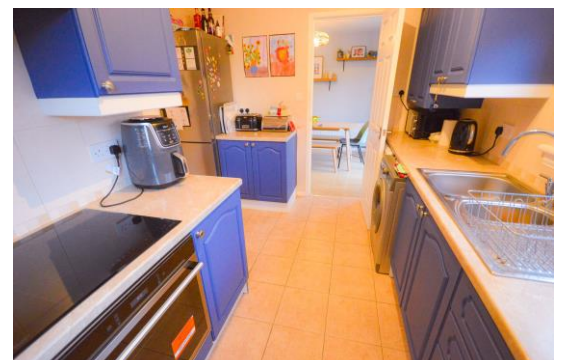




Dunkeld Close Blyth

- Semi Detached
- Three Bedrooms
- Large Rear Garden
- Garage and Off Street Parking
- Freehold, Epc Rating C

£ 170,000



01670 352 900
21-23 Waterloo Road, Blyth, NE24 1BW

ROOK
MATTHEWS
SAYER

www.rookmatthewssayer.co.uk
blyth@rmsestateagents.co.uk

Dunkeld Close

Blyth NE243SP

A gorgeous, semi detached family home on this sought after street, located on the ever-popular South Beach Estate. The property will make a beautiful family home. Briefly comprises: Entrance, lounge/diner, stylish fitted kitchen. Three good size bedrooms to the first floor and fantastic modern bathroom suite with shower. To the outside, there is a front garden providing off street parking for several cars and a beautiful rear garden, perfect for those alfresco evenings. There is also a garage to the front. Interest in this property will be high call 01670 352900 or email Blyth@rmsestateagents.co.uk to arrange your viewing.

Entrance

UPVC entrance door into hallway.

LOUNGE 22'51 x 11'77 (6.83m x 3.53m) Max measurements

Double glazed window to the front and single radiator. Open plan into dining area with French doors into rear garden.

KITCHEN 11'1 x 9'11 (3.38m x 3.02m) L shape

Fitted with a range of wall, floor and drawer units with coordinating work surfaces. Stainless steel sink unit with mixer tap and tiled splash backs. Built in electric oven, electric hob, integrated fridge freezer and plumbed for washing machine and dishwasher. Double glazed window to the rear and patio doors into rear garden.

LOFT

Partially boarded with pull down ladders.

BATHROOM

Three piece suite comprising: panelled bath with over shower and glass screen. Low level W.C, hand basin, tiling to walls and floor. Double glazed windows x 2.

BEDROOM ONE 12'50 x 10'44 (3.75m x 3.15m)

Double glazed window to the front and single radiator.

BEDROOM TWO 10'47 x 9'80 (3.15m x 2.95m) Max measurements

Double glazed window to the rear and single radiator.

BEDROOM THREE 9'65 x 8'97 (2.90m x 2.67m)

Double glazed window to the front.

EXTERNAL

Block paved driveway providing off street parking leading to integral single garage.

Low maintenance garden to the rear with lawn and patio area.

PRIMARY SERVICES SUPPLY

Electricity: MAINS

Water: MAINS

Sewerage: MAINS

Heating: MAINS

Broadband: ADSL

Mobile Signal Coverage Blackspot: NO

Parking: GARAGE AND DRIVEWAY

MINING

The property is not known to be on a coalfield and not known to be directly impacted by the effect of other mining activity. The North East region is famous for its rich mining heritage and confirmation should be sought from a conveyancer as to its effect on the property, if any.

TENURE

Freehold – It is understood that this property is freehold, but should you decide to proceed with the purchase of this property, the Tenure must be verified by your Legal Adviser

COUNCIL TAX BAND: B

EPC RATING: C

BL10886 .AJ .GH .23/1/24 .V.V1.



Important Note: Rook Matthews Sayer (RMS) for themselves and for the vendors or lessors of this property, whose agents they are, give notice that these particulars are produced in good faith, are set out as a general guide only and do not constitute part or all of an offer or contract. The measurements indicated are supplied for guidance only and as such must be considered incorrect. Potential buyers are advised to recheck the measurements before committing to any expense. RMS has not tested any apparatus, equipment, fixtures, fittings or services and it is the buyer's interests to check the working condition of any appliances. RMS has not sought to verify the legal title of the property and the buyers must obtain verification from their solicitor. No persons in the employment of RMS has any authority to make or give any representation or warranty whatever in relation to this property.

Money Laundering Regulations – intending purchasers will be asked to produce original identification documentation at a later stage and we would ask for your co-operation in order that there will be no delay in agreeing the sale. We will also use some of your personal data to carry out electronic identity verification. This is not a credit check and will not affect your credit score.

16 Branches across the North-East



The Property
Ombudsman